

VIPER 4-CYCLE ENGINE
Parts and Warranty Information

Parts List - Engine Assembly

Ref#	Part#	Description
1	13192	Carburetor
2	300413	Assy Centrifugal Clutch Rotor Viper
3	13200*	Muffler
4	13238	Intake Base Assembly
5	13242*	Ignition Coil
6	13194	Recoil Assembly
7	13202*	Heat Shield Muffler
8	13244	Recoil Clutch
9	13243	Spark Plug Ngk Cmr6a
10	13196*	Oil Cap
11	13195	Gas Tank
12	300471	Bolt With Washer M5 X 0.8 X 12mm
13	10887	Bolt M5 X 0.8 X 16mm Pph W/ Washer
14	13241	Flywheel
15	13321*	Valve Cover
16	13317*	Hose Valve Cover Breather
17	300494	Grommet Fuel Tank Two Hole
18	13239	Mount Ring And Shroud
19	13193*	Shroud Engine
20	13197	Air Filter Cover
21a	13198	Air Filter
21b	17078	Air Filter Fiber
22	300450	Bolt M8 X 1.25 X 25mm Shoulder 10mm
23	300462	Washer 15.8 X 8.4 X 1.6mm
24	300449	Washer M8 Spring
25	13306	Fuel Line Cut To 275mm
26	13318*	Crankcase Breather
27	13352	Gas Cap Complete 4 Cycle Epa Self Vent
28	13295	Rubber Gas Tank Holder Top
29	13296	Rubber Tank Holder Bottom Left
30	13297	Rubber Tank Holder Bottom Right
31	13299*	Carburetor Gasket

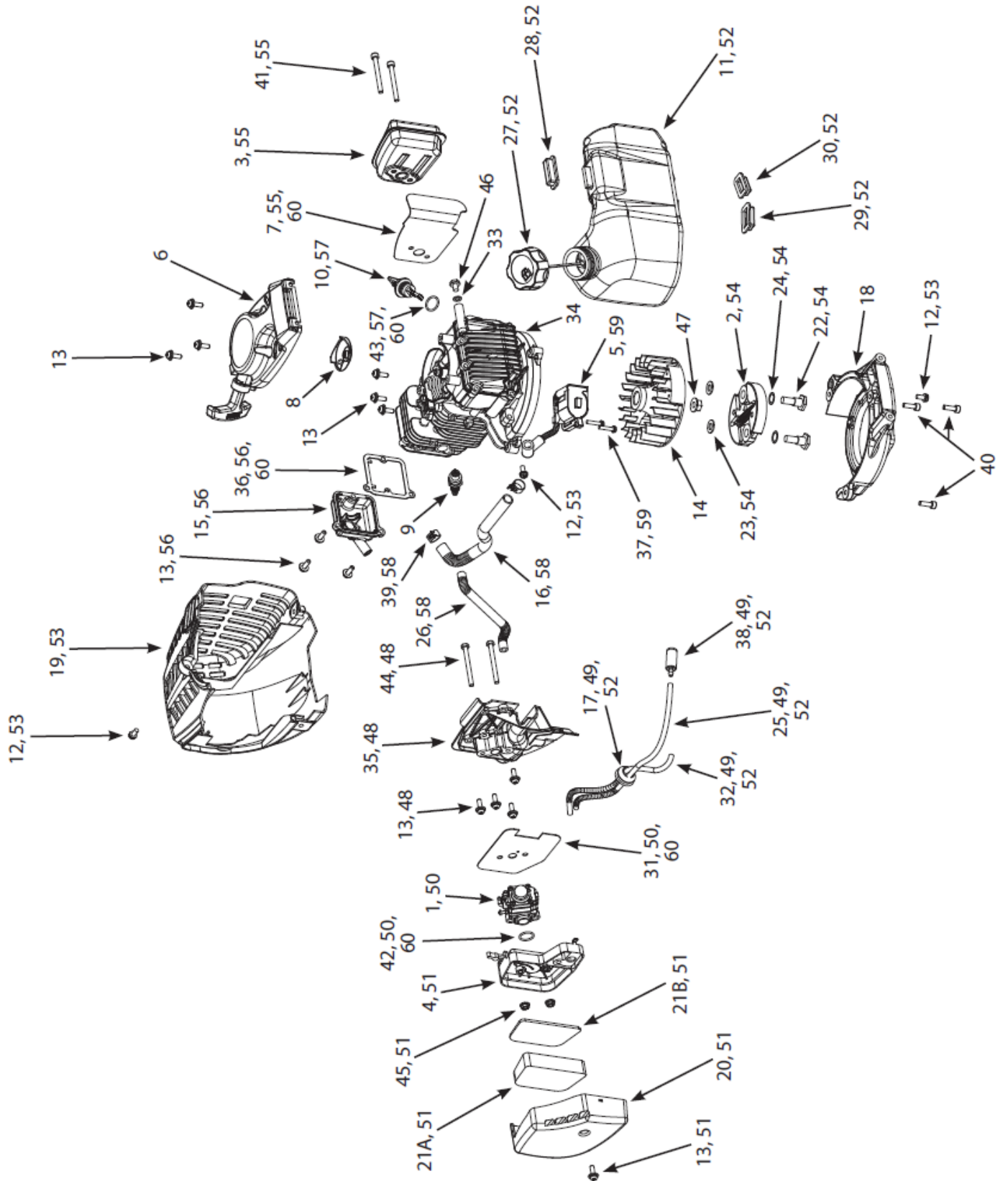
Ref#	Part#	Description
32	13307	Fuel Line Cut To 195mm
33	13320	Washer M6 X 10mm X 1mm
34	13322	Engine Block
35	13328	Carburetor Insulator
36	13324*	Gasket Valve Cover
37	13325	Bolt M4 X 0.7 X 20mm Pph With Washer
38	3004103	Fuel Filter Porous Plastic Aluminum Core
39	13395*	Hose Clamp 13.5mm
40	W1200123	Bolt M5 X 0.8 X 16
41	13181	Bolt M5 X 0.8 X 50mm
42	13330*	O-Ring 15 X 18.6 X 1.8mm
43	13392*	O-Ring 15.6 X 19.16 X 1.78mm
44	13332	Bolt M5 X 0.8 X 55
45	400020	Nut M5 X 0.8 Toplck Hhf Gr 8.8
46	13449	Bolt M6 X 1.0 X 8mm X 12mm
47	300337	Nut M8 X 1.25mm

ENGINE PART KITS LIST

Ref#	Part#	Description
48	13390	Carburetor Bracket Kit
49	13308	Fuel Lines Kit
50	13329	Carburetor Kit
51	13363	Air Filter Kit
52	13388	Gas Tank Kit With Fuel Line
53	13389	Engine Shroud Kit
54	11235	Clutch Kit 76.76mm Od Viper
55	13391	Muffler Kit
56	13298	Valve Cover Kit
57	13393	Oil Cap Kit With O-Ring
58	13394	Breather Hoses Kit
59	13400	Ignition Coil Kit
60	13066	Gaskets Kit

* Available as Kit only.

Schematic Diagram - Engine Assembly



092214

Maintenance, replacement or repair of the emissions control devices and systems may be performed by any non-road engine repair establishment or individuals. However, items must be serviced by an authorized dealer to obtain “no charge” emissions control warranty service.

Federal Emission Control Warranty Statement

YOUR WARRANTY RIGHTS AND OBLIGATIONS

The United States Environmental Protection Agency (EPA), together with Ardisam, Inc. (Ardisam), are pleased to explain the Emission Control System Warranty on your small off-road engine (SORE). New small off-road engines must be designed, built and equipped to meet stringent anti-smog standards the federal government. Ardisam will warrant the emission control system on your engine for the periods of time listed below provided there has been no abuse, neglect, modification or improper maintenance of your engine.

The emission control system includes all components whose failure would increase the emissions of any regulated pollutant. These components are listed in the emission-related parts list located in a subsequent section of this emissions warranty statement. Ardisam will repair your engine at no cost to you for diagnosis, replacement parts and labor, should a warrantable condition occur.

MANUFACTURER’S WARRANTY COVERAGE:

The emission control system is warranted for two years. If, during such warranty period, any emission-related part on your engine is found to be defective in materials or workmanship, repairs or replacement will be performed by a Ardisam Authorized Warranty Service Facility.

PURCHASER’S/OWNER’S WARRANTY RESPONSIBILITIES:

As the SORE purchaser/owner, you are responsible for the completion of all required maintenance as listed in your factory supplied Manual(s). For warranty purposes, Ardisam recommends that you retain all receipts covering maintenance on your SORE. However, Ardisam cannot deny warranty solely because of the lack of receipts or for your failure to ensure the completion of all scheduled maintenance.

As the SORE purchaser/owner, you should, however, be aware that Ardisam may deny any and/or all warranty coverage or responsibility if your SORE or a part/component thereof, has failed due to abuse, neglect, improper maintenance or modifications, or the use of counterfeit and/or “grey market” parts not made, supplied or approved by Ardisam.

You are responsible for presenting your SORE to an Ardisam Authorized Warranty Service Facility as soon as a problem occurs. The warranty repairs should be completed in a reasonable amount of time, not to exceed 30 days.

Warranty service can be arranged by contacting either your selling dealer or a Ardisam Authorized Warranty Service Facility. To locate the Ardisam Authorized Warranty Service Facility nearest you, call our free number:

800-345-6007

IMPORTANT NOTE: This warranty statement explains your rights and obligations under the Emission Control System Warranty (ECS Warranty), which is provided to you by Ardisam pursuant to federal law. See also the Ardisam “Product Warranty” (non-emission warranties), which is enclosed herewith on a separate sheet or located in additional materials accompanying this product. The ECS Warranty applies only to the emission control system of your new engine. If there is any conflict in terms between the ECS Warranty and the Ardisam

Warranty, the ECS Warranty shall apply except in circumstances where the Ardisam Warranty may provide a longer warranty period. Both the ECS Warranty and the Ardisam Warranty describe important rights and obligations with respect to your new engine.

Warranty service can be performed only by an Ardisam Authorized Warranty Service Facility. When requesting warranty service, evidence must be presented showing the date of the sale to the original purchaser/owner. Ardisam will not be responsible for any and/or all damages or losses incurred while the engine is being transported/ shipped for inspection or warranty repairs.

IF YOU HAVE ANY QUESTIONS REGARDING YOUR WARRANTY RIGHTS AND RESPONSIBILITIES, YOU SHOULD CONTACT ARDISAM AT THE FOLLOWING ADDRESS:

Ardisam, Inc.
1160 Eighth Avenue; P.O. Box 666
Cumberland, Wisconsin 54829
800-345-6007 · Fax (715) 822-4180
E-mail: info@ardisam.com

II. EMISSION CONTROL SYSTEM WARRANTY

Emission Control System Warranty (ECS Warranty) for equipment using small off-road engines:

(a) Applicability: This warranty shall apply to equipment that uses small off-road engines. The ECS Warranty Period shall begin on the date the new engine or equipment is purchased by/delivered to its original, end-use purchaser/owner and shall continue for 24 consecutive months thereafter.

(b) General Emissions Warranty Coverage: Ardisam warrants to the original, end-use purchaser/owner of the new engine or equipment and to each subsequent purchaser/owner that each of its engines is...

(1) Designed, built and equipped so as to conform with all applicable regulations adopted by the EPA pursuant to their respective authority, and

(2) Free from defects in materials and workmanship which, at any time during the ECS Warranty Period, may cause a warranted emissions-related part to fail to be identical in all material respects to the part as described in the engine manufacturer's application for certification.

The ECS Warranty only pertains to emissions-related parts on your engine, as follows:

(1) Any warranted, emissions-related parts that are not scheduled for replacement as required maintenance in the Maintenance Schedule (located in the section of the Manual(s) pertaining to maintenance) shall be warranted for the ECS Warranty Period. If any such part fails during the ECS Warranty Period, it shall be repaired or replaced by Ardisam according to Subsection (4) below. Any such part repaired or replaced under the ECS Warranty shall be warranted for the remainder of the ECS Warranty Period.

(2) Any warranted, emissions-related part that is scheduled only for regular inspection as specified in the Maintenance Schedule (located in the section of the Manual(s) pertaining to maintenance) shall be warranted for the ECS Warranty Period. A statement in such written instructions to the effect of "repair or replace as necessary" shall not reduce the ECS Warranty Period. Any such part repaired or replaced under the ECS Warranty shall be warranted for the remainder of the ECS Warranty Period.

(3) Any warranted, emissions-related part that is scheduled for replacement as required maintenance in the Maintenance Schedule (located in the section of the Manual(s) pertaining to maintenance) shall be warranted for the period of time prior to the first scheduled replacement point for that part. If the part fails prior to the first scheduled replacement, the part shall be repaired or replaced by Ardisam according to Subsection (4) below. Any such emissions-related part repaired or replaced under the ECS Warranty shall be warranted for the remainder of the ECS Warranty Period prior to the first scheduled replacement point for such emissions-related part.

(4) Repair or replacement of any warranted, emissions-related part under this ECS Warranty shall be performed at no charge to the owner at a Ardisam Authorized Warranty Service Facility.

(5) When the engine is inspected by a Ardisam Authorized Warranty Service Facility, the owner shall not be held responsible for diagnostic costs if the repair is deemed warrantable.

(6) Ardisam shall be liable for damages to other original engine components or approved modifications proximately caused by a failure under warranty of any emission-related part covered by the ECS Warranty.

(7) Throughout the ECS Warranty Period, Ardisam shall maintain a supply of warranted emission-related parts sufficient to meet the expected demand for such emission-related parts.

(8) Any Ardisam authorized and approved emission-related replacement part may be used in the performance of any ECS Warranty maintenance or repairs and will be provided without charge to the purchaser/owner. Such use shall not reduce Ardisam's ECS Warranty obligations.

(9) Unapproved, add-on, modified, counterfeit and/or "grey market" parts may not be used to modify or repair a Ardisam engine. Such use voids this ECS Warranty and shall be sufficient grounds for disallowing an ECS Warranty claim. Ardisam shall not be held liable hereunder for failures of any warranted parts of a Ardisam engine caused by the use of such an unapproved, add-on, modified, counterfeit and/or "grey market" part.

EMISSION-RELATED PARTS INCLUDE THE FOLLOWING (IF EQUIPPED):

- (1) Fuel Metering System
 - (i) Carburetor and internal parts (and/or pressure regulator or fuel injection system).
 - (ii) Air/fuel ratio feedback and control system.
 - (iii) Cold start enrichment system.
 - (iv) Fuel Tank.
- (2) Air Induction System
 - (i) Controlled hot air intake system.
 - (ii) Intake manifold.
 - (iii) Air filter.
- (3) Ignition System
 - (i) Spark Plugs.
 - (ii) Magneto or electronic ignition system.
 - (iii) Spark advance/retard system.
- (4) Exhaust Gas Recirculation (EGR) System
 - (i) EGR valve body, and carburetor spacer if applicable.
 - (ii) EGR rate feedback and control system.
- (5) Air Injection System
 - (i) Air pump or pulse valve.
 - (ii) Valves affecting distribution of flow.
 - (iii) Distribution manifold.
- (6) Catalyst or Thermal Reactor System
 - (i) Catalytic converter.
 - (ii) Thermal reactor.
 - (iii) Exhaust manifold.
- (7) Particulate Controls
 - (i) Traps, filters, precipitators, and any other device used to capture particulate emissions.
- (8) Miscellaneous Items Used in Above Systems
 - (i) Electronic controls.
 - (ii) Vacuum, temperature, and time sensitive valves and switches.
 - (iii) Hoses, belts, connectors, and assemblies.

